

Stat 185 -Quiz 1
Friday, Sept 1

Name: _____

1. Given the data set $\{4, 5, 6, 8, 3, 8, 9, 7, 6, 2, 3\}$,
 - (a) Compute the corresponding five point summary
 - (b) Find the inter-quartile range
 - (c) Draw the corresponding box-plot
2. Classify the histogram shown in figure ?? on the reverse as
 - (a) symmetric or skewed and
 - (b) unimodal or bimodal.
3. Students in an intro stats class were asked to classify their politics as Liberal, Moderate, or Conservative. The results are shown in table ?? below.
 - (a) What percent of the class is male?
 - (b) What percent of the class considers themselves to be conservative?
 - (c) What percent of the of the men in the class consider themselves to be conservative?
 - (d) What percent of the class are men who consider themselves to be conservative?

Gender	Politics			Total by Gender
	Liberal	Moderate	Conservative	
Female	35	36	6	77
Male	50	44	21	115
Total by Politics	85	80	27	192

Table 1: A contingency table for problem 3

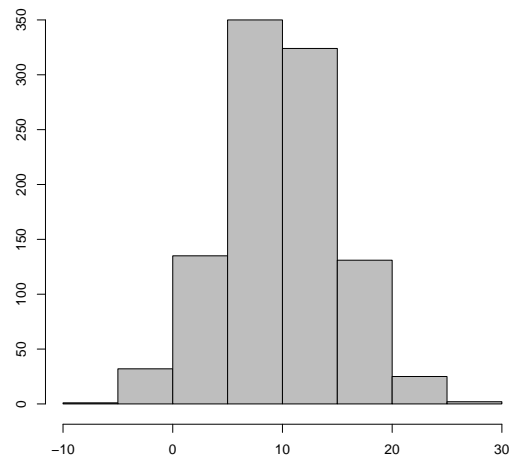


Figure 1: A histogram